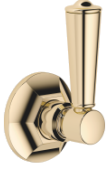


ST 060 401 0371

- rosette Ø 60 mm
- head part with cut-to-length spindle and sleeve



Individual components of this set

You need the following components for this set

1x 11 170 370-09



1x 36 608 371-09





MADISON Wall valve clockwise closing 3/4" - Durabronss (23kt Gold)

MADISON


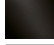
ST 060 401 0371

ST 060 401 0371

- for basin fittings

NOTE: Mixers are supplied without lever inserts.
Please order the lever inserts separately!



	Durabronss (23kt Gold)	11 170 370-09
	Chrome	11 170 370-00
	Brushed Platinum	11 170 370-06
	Platinum	11 170 370-08
	white	11 170 370-12
	black	11 170 370-13
	Brushed Durabronss (23kt Gold)	11 170 370-28
	Brushed Dark Platinum	11 170 370-99

ST 060 401 0371



ST 060 401 0371

Parts for other
finishes can be found
here: [Chrome](#)





MADISON Wall valve clockwise closing 3/4" - Durabronss (23kt Gold)

MADISON

ST 060 401 0371



MADISON Wall valve clockwise closing 3/4" - Durabronss (23kt Gold)

MADISON

ST 060 401 0371

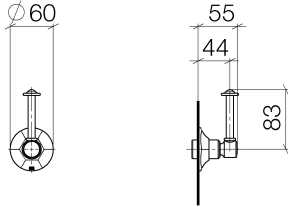


MADISON Wall valve clockwise closing 3/4" - Durabronss (23kt Gold)

MADISON

ST 060 401 0371

ST 060 401 0371



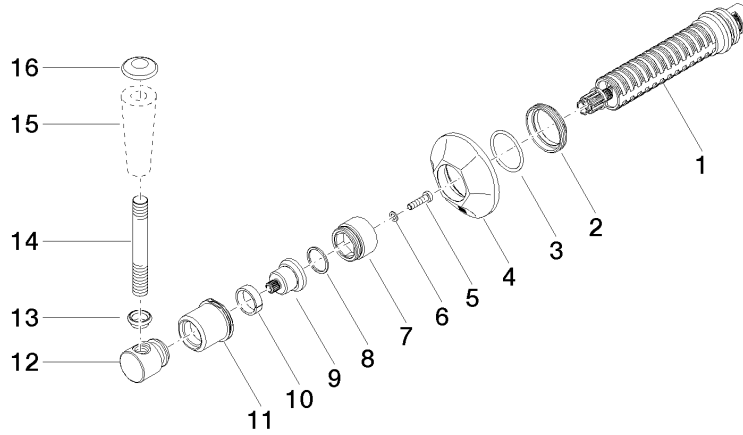
Codes & Standards

ADA	ASME A112.18.1/CSA B125.1
-----	---------------------------------

Certificates

IAPMO_4976 (1). WRAS_2010066.

ST 060 401 0371



Spare parts list

No.	Item Number	Name	Quantity used	Delivery time
1	90 90 03 127 00 90	top	1	2
2	09 23 10 125-00	nut	1	10
3	90 14 10 063 00 90	seal	1	2
4	09 27 37 102-09	rosette	1	40
5	09 30 30 069 90	screw	1	2
6	09 30 11 194 90	disc	1	2
7	09 18 30 007-09	sleeve	1	60
8	90 28 10 030 00 90	ring	1	2
9	09 12 12 064-09	base	1	60
10	90 14 15 021 00 90	ring	1	2
11	09 21 02 161-09	cover	1	40
12	09 20 37 101-09	handle	1	40
13	09 20 37 001-09	handle	1	40
14	09 28 22 013 90	pipe	1	2
15	11 170 370-09	MADISON Lever insert - Durabronz (23kt Gold)	1	40
16	09 30 30 062-09	screw	1	40